

# ***Honeywell Scanning & Mobility***



***Marek Holesovsky***  
***Sales manager Eastern Europe***

**Honeywell**

# HSM Mobility Portfolio 2012

Honeywell





**Dolphin 6000 Scanphone**

**Honeywell**

## Dolphin 6000 Scanphone Use Case & Applications



### ***Field sales***

*Cellular Voice*  
*Corporate email*  
*IM / Texting*  
*CRM applications*  
*Sales / order tracking*  
*Order taking*  
*Appointment scheduling*  
*Mobile sales*  
*Navigation*  
*Proof of service (signature capture and photo)*



### ***Field services***

*Cellular voice*  
*Corporate email*  
*Service automation*  
*Inventory management*  
*Invoicing / signature capture*  
*Task management*  
*Equip Diagnostics*  
*Order taking*  
*Time tracking*  
*CRM*  
*Mobile sales*  
*Navigation*  
*Mapping*



### ***Retail***

*Voice Communications*  
*Corporate email*  
*Inventory management*  
*Price management*  
*Item lookup*  
*CAO*  
*Store transfers*  
*Task management*  
*Order taking*  
*Time tracking*  
*CRM*  
*Mobile POS*  
*Comp pricing*

## Technology

- *Windows Mobile 6.5*
- *416MHz processor*
- *256MB RAM x 512MB FLASH memory*
- *8GB Micro SD memory card option*
- *2.8" QVGA display / resistive touch panel*
- *1D barcode scanner*
- *3Mpx Color Camera*
- *GSM/GPRS/EDGE, WiFi, BT, GPS*
- *5.7 WH battery, power efficient platform*
- *29-Key Numeric keypad*
- *3'/.9m – 4'/1.2m drop to concrete*
- *Exceeds 800 - 1m tumbles*
- *IP 54 sealing*
- *Pocket sized, <200g*







**Dolphin 6100**

**Honeywell**

# 6100 Technical Profile



- *Best-in-class PXA300 architecture*
- *Windows CE 5.0*
- *128 MB/128 MB Memory*
- *2.8" ¼ VGA display / touch screen*
- *28-key shifted alpha numeric keypad*
- *Angled imager with Adaptus 5.0*
- *IP54 Rated & Independently Certified*
- *Tested to withstand 1.2m (4') drops to concrete and 500 1m (3.3') tumbles (1000 drops)*
- *Enterprise-class 802.11 b/g radio*
- *Bluetooth 2.0 + Enhanced Data Rate (EDR)*
- *Direct Charging Port*
- *Standard and extended capacity battery options*
- *Enables VoIP connection*





**Dolphin 6500 Mobile Computers**

**Honeywell**



## Dolphin 6500 Features

**Adaptus® Imaging Technology**

**Enterprise Class,  
Co-Existent WLAN Technology**

**Class-Leading PXA300 Architecture**

**Large 3.5" QVGA Display**

**Windows CE 5.0 & WEH 6.5  
Plus Honeywell Software Solutions**

**Ergonomic Scan and  
Navigation Keys**

**User Preferred Ergonomics**

**Shift-PLUS™  
Power Management**

**Reliable Construction**



**Angled Image  
Engine**



**Numeric and  
A-N Keypads**



**Direct  
Charging Port**

## MX8

### Powerful Processor

PXA270, 520MHz

### Open Standards

Windows CE 5.0 Pro  
Windows Mobile (Q2 '09)

### Full-shift Battery

10+ hours battery life,  
360 scans and WLAN  
transactions per hour

### Flash Expansion

Mini-SD card slot



### Broad Range of Scanners and Imager

Standard Range Laser  
1D and 2D imagers

### Brilliant, QVGA LCD with touch-screen

300 NITS

### Ergonomics

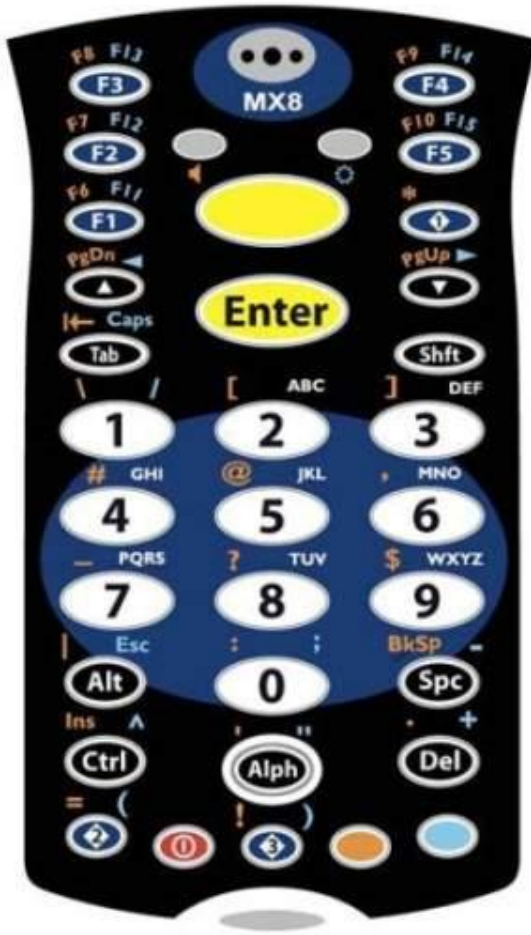
Lightweight design yet  
rugged to last long

### Toughtalk™ Technology

4-Wire audio interface for  
optimal voice recognition



## MX8 Keyboard Options



Triple-Tap



Alpha-Mode

## MX8 Accessories



*Charger*



*Vehicle Mount*



*Rubber Boot*







**Dolphin 7800**

**Honeywell**

## Dolphin 7800 Use Case & Applications



### **Field services**

Cellular voice  
Corporate email  
Service automation  
Inventory management  
Invoicing / signature capture  
Task management  
Equip Diagnostics  
Order taking  
Time tracking  
CRM  
Mobile sales  
Navigation  
Mapping



### **T&L**

Inventory & Order management  
Display/shelf compliance  
Surveys  
Route optimization  
Enterprise alerts  
Accounting  
Voice support  
Navigation/Mapping  
Asset tracking  
Pickup and delivery  
Fleet management  
Baggage and cargo tracking  
Proof of delivery  
Dispatch / routing



### **Retail**

Inventory management  
Price management  
Item lookup  
CAO  
Store transfers  
Task management  
Order taking  
Time tracking  
CRM  
Mobile POS  
Mobile ID  
Comp pricing  
Voice support  
Corporate e-mail



### **Healthcare**

Medication administration  
Specimen collection  
Vitals  
Nurse call  
Pager replacement  
Physician reference  
Charge capture  
Inventory management  
EMR applications  
Voice communications  
Dictation



### **Government**

eCitation/Ticketing  
First response  
Asset management  
Inspections & maintenance  
Fleet management  
Security & Access control  
Mobile ID  
Code enforcement Secure freight tracking  
Dispatch and dynamic routing  
Security surveillance – remote monitoring

## Technology

- *Windows Embedded Handheld 6.5*
- *800MHz TI-OMAP processor*
- *256MB RAM x 512MB FLASH memory*
- *microSDHC memory card support*
- *3.5" wide view sunlight readable VGA display*
- *Adaptus Gen 6 imaging*
- *3Mpx Color Camera*
- *GOBI SPR option, GSM/HSPA, CDMA/EVDO, 802.11 a/b/g/n, CCX v4, BT, GPS*
- *8.1 & 13.9 WH smart battery packs, hot swappable*
- *QWERTY/AZERTY/QWERTZ/Numeric/DSD keypads*
- *4'/1.2m drop to concrete across temp range*
- *Exceeds 1000 - 1m tumbles*
- *IP 64 sealing*
- *310 - 357g, configuration dependent*



mm



**Dolphin 9700**  
Mobile Computer

**Honeywell**



## Appendix



- Windows Mobile 6.5 / HSM Power Tools
- 624MHz Processor
- 256MB RAM / 1GB FLASH On-Board Memory / 32GB Memory Expansion
- 3.5G GSM/HSDPA Global Radio
- 802.11 a/b/g Global Radio with Enterprise Security
- Automated A-GPS Technology
- Full Voice and Audio
- 3.7" High Def VGA Display
- 2MP Camera w/ Automated Camera Control (ACC)
- IP64 Environmental Sealing
- 5' (1.5m) drop to concrete and 1000 1.6' (.5m) tumbles
- Advanced Mobile Power System (AMPS) / 7.4v high capacity battery

## Automated Camera Control - ACC

- **Provides full programming control of camera functions**

- New Camera Demo with advanced features for image capture and editing
- Camera API. .dll, and sample code for developers
- Pre-programmed Picture Profiles & Focus Modes for specific tasks & best picture quality

- **Simplifies application development**

- Reduces programming time and costs

- **Greatly simplifies camera use**

- Point-and-shoot simplicity
- Reduces image blur, improves picture quality

- **Supports co-operation of camera and imager**

- Enables bar code scanning and picture taking in same application
- Ensures application reliability & improves worker productivity



## Tecton and TectonCS

### **Powerful Processor**

PXA320, 806MHz  
Real time clock

### **On-board Memory**

On-board 256MB RAM  
256MB Flash

### **Flash Expansion**

SD card up to 1GB

### **Advanced OS**

Windows CE 6.0  
Windows Mobile 6.5 (Q3'11)

### **Remote Management**

Wavelink Avalanche plus  
eXpress Config

**Standard, full-shift  
battery**



### **Broad Range of Scanners and Imager**

Lorax, SE1524ER  
Standard range Laser SE955E  
Base Laser SE955I  
2D Imager– HHP 5300  
VGA Image capture capable

### **Radios**

802.11a/b/g  
Bluetooth 2.0 +EDR

### **Bright, indoor Display**

280NIT  
3.5in/9.0cm

### **Backlit Keypad™**

Color-coded, 55 or 32 backlit keys  
Flexible Keyboard Mapping

## Tecton and TectonCS Features



**21oz./595 grams**  
With battery, SR scanner,  
WLAN, Bluetooth and  
handstrap

**Operating Temperature**  
Standard: -20°C to 50°C  
Cold Storage: -30°C to  
50°C

**MIL Std 810F  
vibration**

**Removable handle  
option**

**Interfaces**  
Speaker  
USB 2.0 Full-speed client  
RS-232 for scanners and  
printers

**Good/Bad scan LED  
and vibration feedback**

**IP65 sealing**

**5 feet/1.5m drop to  
concrete**  
**6 feet/1.8m drop to  
concrete with optional  
boot**

**Cold Storage option**  
Heated display  
Heated scan window  
Low-temp battery

**VOICE READY**

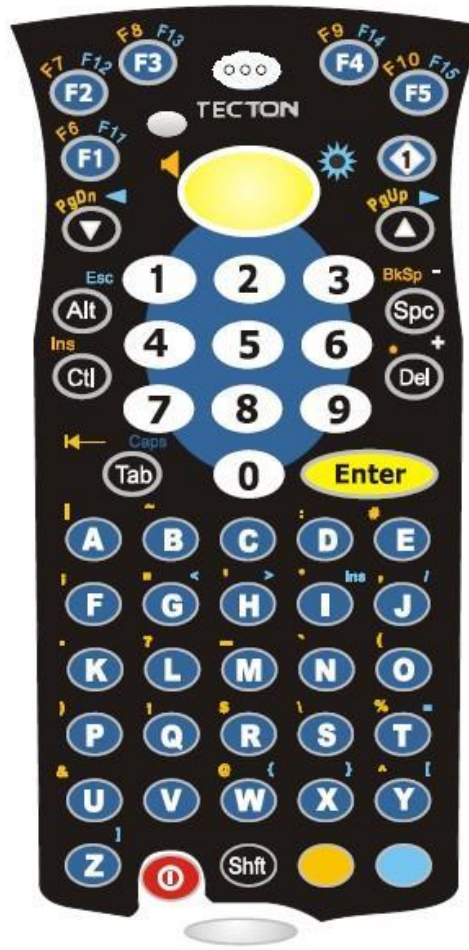
**Toughtalk™ Technology**  
Headset connector with 4  
wire to improve performance  
in voice recognition  
applications



## Tecton Keypads



32-key Keypad



55-key ANSI/CE Keypad



55-key IBM 5250 Keypad

## Tecton Accessories





**Dolphin 99EX**

**Honeywell**



## UPS chose Dolphin 99EX

**UPS AND HONEYWELL  
SET STAGE FOR NEXT  
HIGH-TECH HANDHELD**

**Global Deployment of 5th Version Starts in  
2011; Offers Continuous Connectivity &  
Industry-First Features**



# Deutsche Post chose Dolphin 99EX



## 99EX technical overview



- *Microsoft Windows Embedded Handheld built on Windows 6.5.3 technology*
- *1GHz TI Processor, 256MB RAM / 1GB Flash*
- *IP67, 6' (1.8m) drop to concrete , 2000+ 1m tumbles*
- *Adaptus 6.0 Imaging Technology*
- *Shift-PLUS Power Management, 11.3 & 18.5 WH batteries*
- *Software-definable radio (Gobi 3000), for data*
- *3.75G GSM/ HSPA+ Global Radio, for voice and data*
- *802.11 a/b/g/n Global Radio with Enterprise Security*
- *3.7" chemically-strengthened, outdoor-viewable display*
- *Automated A-GPS Technology*
- *Honeywell Smart Sensors*
- *3.1MP camera with Automated Camera Control (ACC)*
- *Honeywell Software and Remote Management tools*

## Keypad options for different use cases

*55 key full alpha-numeric*



*43 key alpha*



*34 key phone*



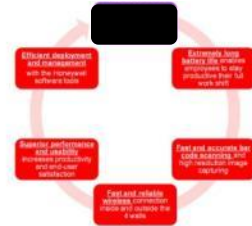
*34 key calculator*



Honeywell\_99EX\_Long\_Day.mov

## Superior durability

- Because device failure in the field simply isn't an option, the 99EX was designed to be the toughest Honeywell offering to-date:
  - IP67 rating
  - 6' drops to concrete
  - 2,000 1m tumbles
  - Redesigned architecture
- The 99EX keeps employees productive in the harshest environments and delivers industry-leading total cost of ownership

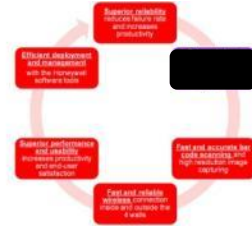


*Significant savings associated with smaller spare unit pool, and reduced cost of fixes*



# Extremely long battery life

- Standard and extended battery options combined with intelligent power management deliver all day battery life:
  - Up to 16.5 hours, Wifi + extended \*
  - Up to 9.5 hours, Wifi + standard \*
  - Up to 14.75 hours Wwan + extended \*\*
- Employees stay productive during their full shift without having to worry about carrying extra batteries or chargers



\*Internal Honeywell testing. Scanning every 9 seconds, sending data over WiFi network.

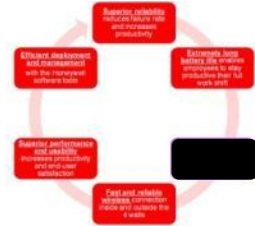
\*\* Internal Honeywell testing. Scanning and sending data over WWAN every 15 seconds, GPS continuously receiving information

Battery life depends on use case and application.

**Significant savings associated with not having to buy chargers and extra batteries**

# Fast and accurate imaging

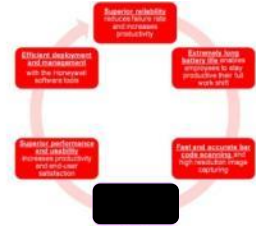
- Adaptus® 6.0 takes the imaging experience to a whole new level:
  - **Faster decoding**
  - **Excellent motion tolerance**
  - **Longer reading distance**
  - **Works in dark, in direct sunlight, or under fluorescent lights**
- Fast and more accurate imaging increases employee productivity allowing employees to accomplish more in less time



*Significant savings and increased top line growth by having a more productive work force*

## Fast and reliable wireless connections

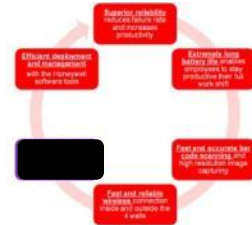
- Full wireless coverage both inside and outside the four walls:
  - **Data coverage for GSM and CDMA with software-definable radio**
  - **Voice and data for GSM**
  - **Super fast “n” Wi-Fi**
  - **Assisted GPS**
- Fast and reliable connectivity ensures that all information is up-to-date and leads to increased productivity and better customer satisfaction



*Savings associated with being able to purchase, deploy, and manage a single configuration*

## Superior performance and usability

- Every second counts and that is why the 99EX was designed to deliver every second:
  - **Industry-leading 1GHz CPU**
  - **Smart sensors for easy computing**
  - **Different keypad options for effortless data entry and manipulation**
  - **3.7" outdoor viewable panel**
  - **Ergonomic design for one hand operation**
- Increased productivity and increased end-user satisfaction deliver results



*Cost savings and increased top line growth by having a more productive work force*



## Key accessories for different use cases

- HomeBase
  - Charges the unit
  - Charges extra battery
  - USB 2.0, RS-232
- Ethernet Base
  - Charges the unit
  - Charges 1 extra battery
  - USB 2.0 + Ethernet connection
- ChargeBase
  - Charges 4 units
- Net Base
  - Charges 4 units
  - Ethernet connection
- QuadCharger
  - Charges 4 batteries
- Mobile Base
  - Charges the unit in vehicle use
  - USB 2.0, RS-232
- NetRack / ChargeRack
  - Charges up to 30 units
  - Ethernet connection available (NetRack)



# HX2

**Impact resistant screen:** Same materials used in jet fighter cockpit windows

**Extended Shift Battery:**  
Standard battery is  
good for +8 hour shifts

**Multiple barcode capture options:**  
Laser ring scanner or  
2D imager ring scanner



***Choice of  
Magnesium alloy or  
Rugged ABS plastic  
Front housing***

***Crisp sunlight readable display:***  
*Exceptional viewing angle in any lighting condition*

***Backlit Eyes-Free  
Keyboard™***  
*Keys are shaped and color  
coded. Choice of three  
different keyboard layouts*



## HANDS-FREE COMPUTERS



## HX2 Keyboard Options



## HX2 Ring Scanner/Imager



- *SR Laser Ring*

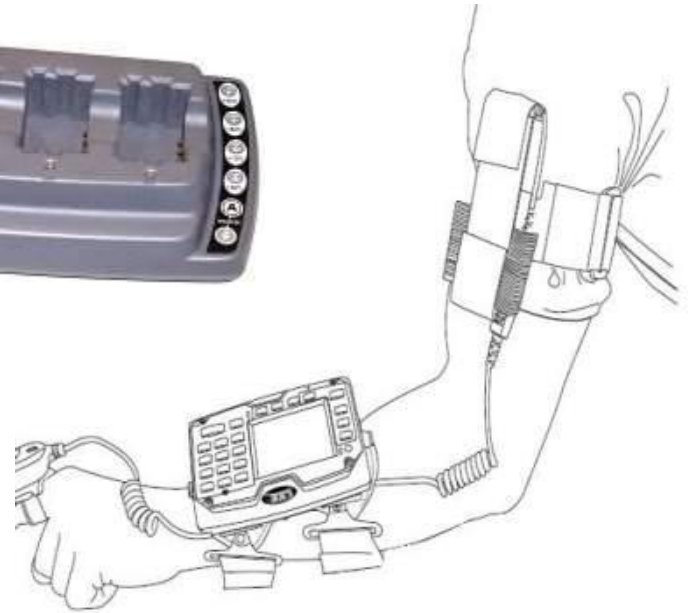
- *Weight*
  - 42 grams
- *Range:*
  - 2.5 cm to 115 cm typical
  - 5 cm to 85 cm guaranteed

- *2D Imager Ring*

- *Weight*
  - 58 grams
- *Range:*
  - 6 cm to 55 cm typical
  - 8 cm to 45 cm guaranteed
- *Additional illumination for low light environments*



## HX2 Accessories



## HX3

### **Magnesium alloy front**

*Ensures survival in rugged environments*

### **Status LEDs**

*Unit Status, Bluetooth and Network Connection*

### **Based on HX2 Platform:**

*Same ring scanners,  
Same battery,  
Same chargers,  
Reduced binary image*

### **Eyes-Free Keyboard™**

*Keys are shaped and color coded. Programmable Yellow, Green and White keys. BLUE modifier key.*

### **ToughTalk™ technology**

*Headset connector with 4 wire to improve performance in voice recognition applications*



**HANDS-FREE COMPUTERS**

## HX3 Accessories



## VX8

### **10" SVGA Display**

*Automatic brightness  
Max. 400 cd/m<sup>2</sup> (NIT)  
Screen Blanking*

### **Processing**

*Multiple processor options  
Atom 1.6GHz  
Dual Core 1.5GHz*

### **Ergonomics**

*Dual front speakers and front  
panel brightness control*

### **Built-In UPS**

*Internal Li-ION battery and  
Power Management*

### **Defroster**

*Operation to -30°C*

### **Connectivity**

*802.11a/b/g  
Bluetooth  
GPRS/UMTS/3G*

### **Extreme Ruggedness**

*Magnesium housing  
IP65 protection*

### **Easy Installation**

*Many RAM mounting options  
available*





## VX9

### **12" Display**

SVGA or XGA  
Max. 1000 cd/m<sup>2</sup> (NIT)  
Screen Blanking

### **Processing**

Multiple processor options  
Atom 1.6GHz  
Dual Core 1.5GHz

### **Ergonomics**

Dual front speakers and  
front panel brightness  
control

### **Built-In UPS**

Internal Li-ION battery



### **Defroster**

Operation to -30°C

### **Connectivity**

802.11a/b/g  
Bluetooth  
GPRS/UMTS/3G

### **Extreme Ruggedness**

Magnesium housing  
IP54 protection

### **Easy Installation**

Many RAM mounting options  
available



## KEYBOARDS for VX8 and VX9

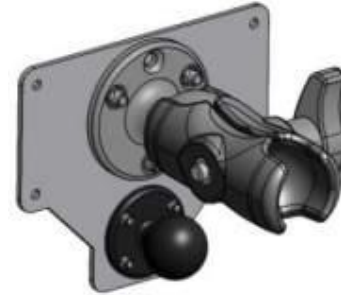


## VX8 and VX9 mounting brackets

- ***3 different arm lengths***
- ***Multiple variants of brackets***
  - ***With and w/o keyboard mount***
  - ***Single or Dual Arms***



## VX8 and VX9 accessories





# Thank you and have a great Day.



Thank You

Ευχαριστώ

감사합니다

Grazie

Merci

Gracias

Vielen Dank

Köszönettel

Dikey

Hvala

תודה

ありがとう

謝謝

شكراً

Teşekkürler

Bedankt

Obrigado!