

**I ♥ ZEBRA
SUPPLIES**



LEOSS
moč podatků

Z-Xtreme™ 5000T Label Solution

For your harshest applications



Chemical*

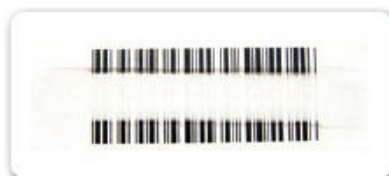
Acetone

Xylene

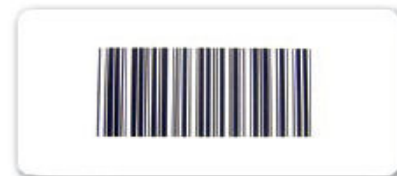
**1,1,1 Trichloroethylene
(TCE)**

**Methyl Ethyl Ketone
(MEK)**

**Z-Xtreme 4000T
5095 Ribbon**



**Z-Xtreme 5000T
Image Lock Ribbon**



* Samples rubbed 20x with chemical